



**Read this manual carefully before installing, operating.**

### **Safety Note**

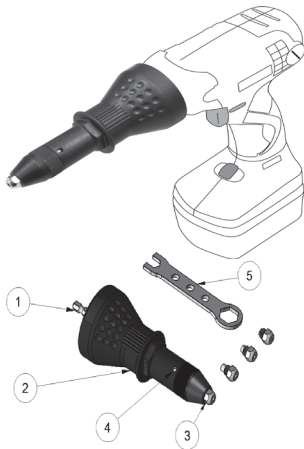
Please note the following safety notes to avoid malfunctions, damage or physical injury:

2. Please observe all safety notes of the used driving tool (drill)
3. Always switch off the driving tool and pull the power plug before maintaining the blind nutting attachment, e.g. changing the nose pieces or when not in use.
4. Only use the blind nutting attachment as indicated in this manual for setting blind nuts. The unit is not designed for continuous, professional use.
5. Always secure the work piece.
6. Do not wear loose, clothing or jewelry. Tie up hair or clothing cannot get into moving parts.
7. Persons with limited physical, sensorial or mental abilities are not allowed to use unit, unless they are supervised for their safety by a qualified person or are briefed by the responsible person how to use the unit.
8. Only use the blind nutting attachment with the included nosepieces.
9. Should the unit become damaged do not use it and have it repaired by a professional or contact our customer support department. Do not disassemble the unit or try repairing it yourself.
10. Do not continue using the unit if it was damaged or the unit was dropped down. Please contact our customer support service.



# 4.8mm(3/16") RIVETER ADAPTOR

Item No : PA-9048



## Technical Data

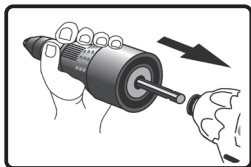
Dimensions	59mm x158mm(2-11/32" x 6-7/32")
Net Weight	318g=0.70 lbs
Gross Weight	368g=0.81 lbs
Nosepiece	2.4mm(3/32") 3.2mm(1/8")
Nosepiece	4.0mm(5/32") 4.8mm(3/16")
Hex Shank	1.4" (6.35mm)
Cordless Drill	12V 14.4V 18V
Cordless Drive	12V 14.4V 18V
Reversible electric	3/8" Drill
Reversible pneumatic	3/8" Drill
Min. Torque Strength	11 Nm = 8 ft/lbs
Max. rpm	1000 rpm

## Overview

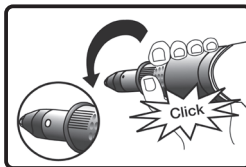
1.Hex Shank	1/4" (6.35mm)
2.Housing	PA+GF
3.Nosepiece	2.4, 3.2, 4.0, 4.8m m
4.Sight Window	Blind Rivet Loading
5.Wrench	1pc

## Assembling and Using Before first Use

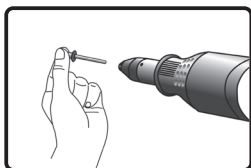
Remove the unit and the accessory out of the packaging. Keep packaging out of reach of children. There is risk of suffocation.



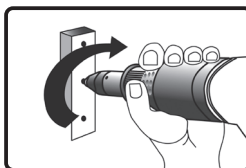
1



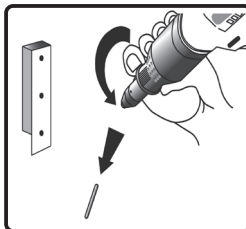
2



3



4

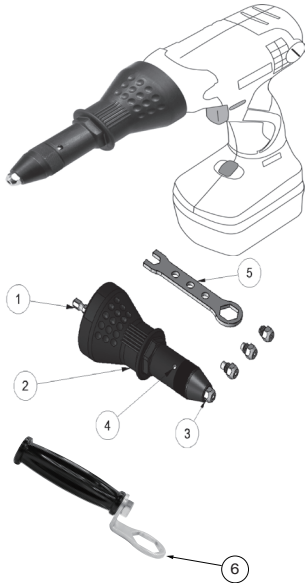


5



## 6.35mm(1/4") RIVETER ADAPTOR

Item No : PA-9064



### Technical Data

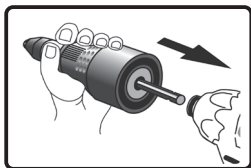
Dimensions	59mm x173mm(2-11/32 x 6-3/4 inch)
Net Weight	330g=0.73 lbs
Gross Weight	500g=1.10 lbs
Nosepiece	3.2mm(1/8), 4.0mm(5/32)
Nosepiece	4.8mm(3/16), 6.4mm(1/4)
Hex Shank	1/4 (6.35 mm)
Cordless Drill	14.4V ,18V
Cordless Drive	14.4V ,18V
Reversible electric	1/2" Drill
Reversible pneumatic	1/2" Drill
Min. Torque Strength	50 Nm = 37 ft/lbs
Max. rpm	1,000 rpm

### Overview

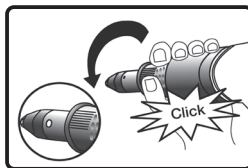
1.Hex Shank	1/4" (6.35mm)
2.Housing	PA+GF
3.Nosepiece	3.2, 4.0, 4.8, 6.4m m
4.Sight Window	Blind Rivet Loading
5.Wrench	1pc
6.Handle	1pc

## Assembling and Using Before first Use

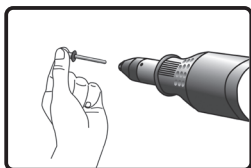
Remove the unit and the accessory out of the packaging. Keep packaging out of reach of children. There is risk of suffocation.



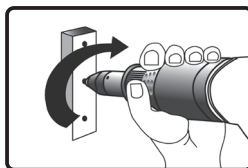
1



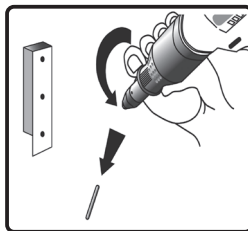
2



3



4

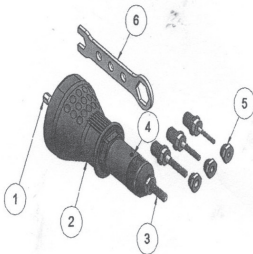
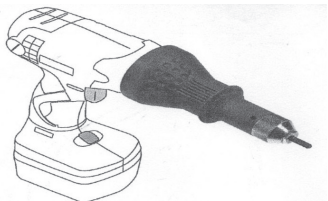


5



## M6 NUT RIVETER ADAPTOR

Item No : PB-9006



### Technical Data

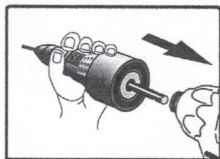
Dimensions	59mm x172mm(2-11/32" x 6-25/32")
Weight	280g=0.62 lbs
Nosepiece	M3 M4 M5 M6
Cordless Drill	M3 M4 M5 M6
Hex Shank	1/4" (6.35 mm)
Cordless Drill	12V 14.4V
Cordless Drive	12V 14.4V
Reversible electric	Drill (Advice 500W)
Reversible pneumatic	Drill (Advice 3/8")
Min. Torque Strength	15 Nm = 11 ft/lbs
Max. rpm	1000 rpm

### Overview

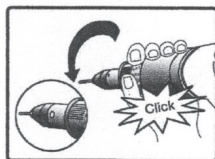
1.Hex Shank	1/4" (8.0mm)
2.Housing	PA+GF
3.Screw	M5(M6, M4, M3)
4.Sight Window	Blind Nut Loading
5.Nosepiece	M5(M6, M4, M3)
6.Wrench	1pc

## Assembling and Using Before first Use

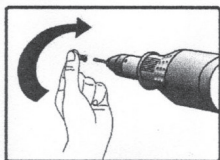
Remove the unit and the accessory out of the packaging. Keep packaging out of reach of children. There is risk of suffocation.



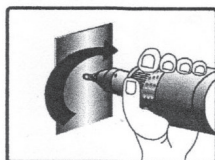
1



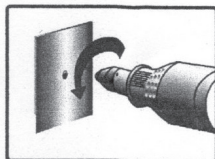
2



3



4



5



# M10 NUT RIVETER ADAPTOR

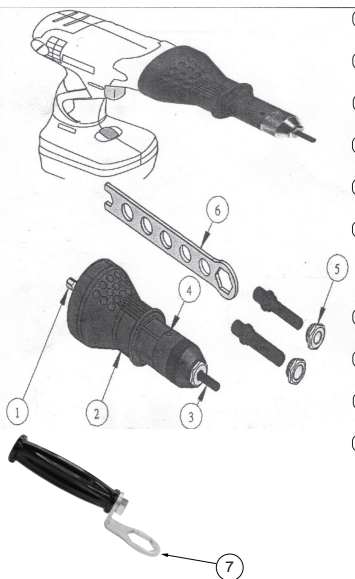
Item No : PB-9010

## Technical Data

Dimensions	59mm x180mm(2-11/32" x 7-3/32")
Weight	350g=0.77 lbs
Nosepiece	M6 M8 M10
Cordless Drill	M6 M8 M10 (only Aluminum)
Hex Shank	1/4" (6.35 mm)
Cordless Drill	14.4V
Cordless Drive	18V
Reversible electric	Drill (Advice 500W)
Reversible pneumatic	Drill (Advice 1/2")
Min. Torque Strength	100 Nm = 73.7 ft/lbs
Max. rpm	800 rpm

## Overview

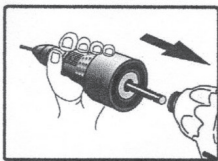
1.Hex Shank	1/4" (6.35)mm
2.Housing	PA+GF
3.Screw	M8
4.Sight Window	Blind Nut Loading
5.Nosepiece	M8(M6, M10)
6.Wrench	1pc
7.Handle	1pc



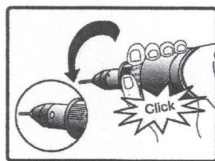


## Assembling and Using Before first Use

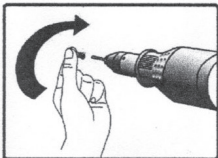
Remove the unit and the accessory out of the packaging. Keep packaging out of reach of children. There is risk of suffocation.



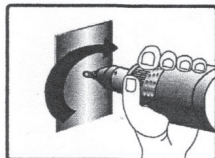
1



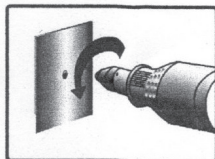
2



3



4



5





